



Parts for JUKI LU-1510, 1510N etc.



JP1510W 6mm
Presser Feet



JP1510XW 9.5mm
Wider Standard Feet



JP1510-N081 4.5mm
Presser Feet



JP1510-L081 4.5mm
Presser Feet



JP1510-R081 4.5mm
Presser Feet



JP1510LN
Cording Feet



JP1510RN
Cording Feet



JP1510ZP
Zipper Feet



JP1510B
Binding Feet



JP1510F
Presser Feet



GL1510
Guiding Feet
SIZE: 3,4,5,6mm



GR1510
Guiding Feet
SIZE: 3,4,5,6mm



GL1510H
Guiding Feet
SIZE: 5,6,8,9mm



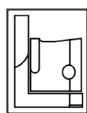
GR1510H
Guiding Feet
SIZE: 1/8", 3/16", 1/4", 5/16", 3/8"



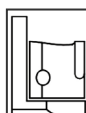
JP1510TP
Tape Attaching Feet
SIZE: 1/8"~1"



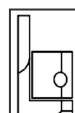
JP1510PL
Piping Feet
SIZE: 3,4,5,6mm



JP1510PR
Piping Feet
SIZE: 3,4,5,6mm



JP1510TG
Piping Feet
SIZE: 3,4,5,6mm



JP1510PD
Piping Feet
SIZE: 3/16", 1/4", 3/8"



JP1510VX
Presser Feet



JP1510FG
Finger Guard



0867-200010
Needle Plate



0867-200020
Needle Plate



0867-200030
Needle Plate



0467-210070
Feed Dog

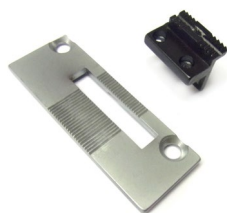
stitch length: 6mm

stitch length: 9mm

stitch length: 12mm

Bobbins

Flip-up Edge Gauge



B1109-563-000+
213-49204



JK1510-NPB/FDB
NP/FD



#213-34800
Alumi.w/knurled stem



#B9117-563-000
steel



#G867
(#MAH-15201-0A0)